

S.M.S.L



n100

使用说明书/USER MANUAL

本说明书的内容可能会随版本更改如有变动, 恕不另行通知

The contents of this manual may be changed with the edition, and are subject to change without notice.

Ver 1.0

安全注意事项

- 请将本音响系统安装在通风良好、阴凉、干燥、干净的位置，远离直射阳光热源、振动、灰尘、潮湿或寒冷。
- 只能使用本机指定的电压。使用高于指定数值的电压很危险，而且可能导致火灾，损坏本机或造成人身伤害。对于使用高于指定电压造成的任何损害，我司将不负任何责任。
- 不要试图自行改造或修理本机。如果需要任何服务，请与销售或者我司客服人员联系。不管有任何理由，都没有打开机壳的必要。
- 如果打算长时间不使用本机（比如度假时），请从墙壁交流电源插座上断开电源线的连接。

重要提示：

本说明书所提到的产品规格和资讯仅供参考。如有内容更新，恕不另行通知。

保修条款

一、服务期限

佛山双木三林科技有限公司承诺产品的良好品质，产品自售出之后7天内正常使用情况下出现故障，客户可以选择退货或者保修（不影响二次销售才可退货）。正常使用一年内出现故障可以免费保修。

二、购买日期以销售商开出的购机发票或收据日期为准，网购可以交易截图为准。

三、有以下情况都不能享受“三包”服务

1. 一切人为因素损坏，包括非正常工作环境下使用或不按照说明书使用。
2. 用户私自拆机、改装、维修。
3. 使用非指定或许可的配件造成损坏的。
4. 机身的QC或保修贴损毁。
5. 不能出示有效购机凭证。
6. 不属于本公司产品。

四、保修方式为送修

此条款只适于中国大陆，其它地区请参考当地销售代理商的规定和国家法规。



特点

- 支持USB2.0 x 2,USB3.0 x 1,LAN,WIFI多输入接口;
- 支持原生连接TIDAL,QOBUZ等音乐服务器;
- 支持Airplay, DLNA等音频推送服务;
- 支持同轴,光纤,AES/EBU和USB输出;
- 支持USB连接CD光驱,播放CD;
- 铝合金CNC加工面板工艺,做工小巧精细,触感一流;
- 内置低噪声音频专用开关电源;
- 支持连接MQA解码。



包装清单

- 1 x SMSL N100
- 1 x 蓝牙天线
- 1 x 品字电源线
- 1 x 说明书
- 1 x 保修卡

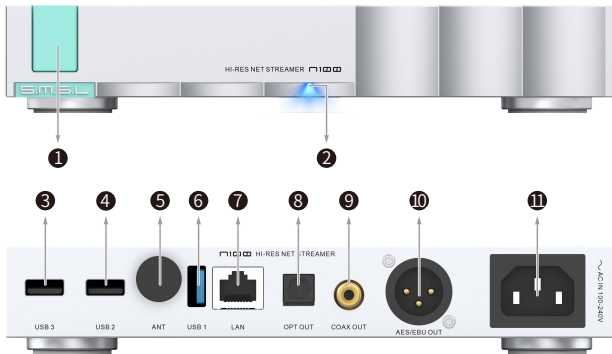


技术参数

| | | | |
|--------|-------------------------------|-----|-------------------|
| 输入接口 | USB2.0x2, USB3.0x1, LAN, WIFI | | |
| 输出接口 | 光纤 / 同轴 / USB / AES/EBU | | |
| 采样率 | 光纤/同轴/ AES/EBU | PCM | 44.1kHz ~ 192kHz |
| | USB | PCM | 44.1~768kHz |
| | | DSD | 2.8224~11.2896MHz |
| WIFI规格 | 2.4GHz,5GHz (802.11AC) | | |
| 消耗功率 | 最大20W | | |
| 待机功耗 | <0.1w | | |
| 体积 | 200 x 34 x175mm(WxHxD) | | |
| 重量 | 880g/1.94lbs | | |

规格时有变更,恕不另行通知。

部件介绍



1 按键

2 指示灯

3 USB输入3(USB2.0)

4 USB输入2(USB2.0)

5 天线

6 USB输入1(USB3.0)

7 LAN接口

8 光纤输出

9 同轴输出

10 AES/EBU输出

11 电源输入



功能介绍

■ 按键

- 短按: 开/关电源
- 长按: 启动WiFi热点

■ 指示灯说明

- 红色常亮: 待机
- 白色闪烁: 开机过程中
- 红色闪烁: 关机过程中(关机时间约15s)
- 绿+蓝闪烁: 开机搜索网络, 等待网络连接
- 绿色常亮: 有线网络已连接
- 蓝色常亮: 无线网络已连接
- 绿+蓝常亮: 无线+有线已连接

Volumio操作说明

安装准备

■ 初次使用/恢复出厂设置

准备工作:

- 设备接通电源前请安装WIFI天线或者设备的网络接口通过网线链接至路由器网络接口或者墙上的网口。
- 上电开机过程约2min,开机过程LED白色闪烁, 开机完成后设备可用LED颜色将由白色闪烁变成其它颜色。接入网线网络可以设备LED指示灯将由开机白色闪动变成绿色常亮, 接入网络不可用时LED绿色+蓝色显示闪烁。

■ 系统配置

安卓手机配置设备前请到www.smsl-audio.com 固件/App更新/其它选项下载Volumio-App.apk安装, 苹果设备app请到苹果商城下载安装。安卓和苹果设备配置方式可用有线网络方式或者无线热点方式配置。Window电脑可以将播放设备的网络接口直连到电脑的网络接口或者, 或者电脑于播放设备共用同一个路由器, 保持共用网络在同一个局域网内。

有线网络方式:

使用移动安卓设备方式配置

- 设备网络接口通过网线链接到路由器网络接口,手机WIFI链接到同一个路由器, 保证设置APP网络和设备处于同一个网络。
- 打开Volumio App可以看到出现设备SMSL N100,没有出现设备点击Looking for devices更新发现附近的Volumio设备。
- 进入设备配置, 配置语言/设备名称/WIFI等。

使用Window电脑方式配置：

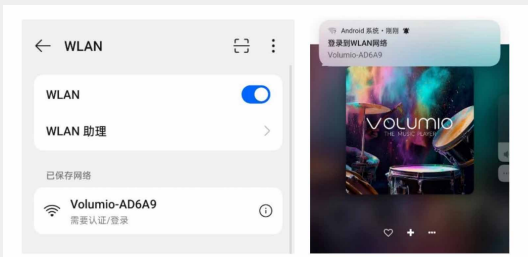
设备和电脑处于同一个局域网，浏览器输入网址<http://friendlywrt/>可以进入Volumio管理页面。

无线热点配置方式：

- 首次配置默认开启无线热点提供链接配置

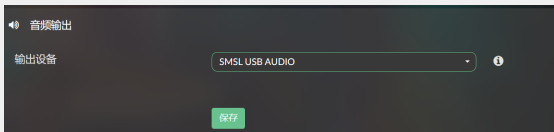
注意：如没有开启请在开机白色LED闪烁变成其它颜色后(过程大概2分钟)长按面板按键5秒开启模块无线热点。

- 无线热点名字为Volumio-xxxx，移动设备没有发现网络请多次重启WIFI更新搜索，移动设备链接该热点后弹出volumio配置页面。
- 进入配置页面选择语言/设备名称/WIFI...，连接WIFI后配置页面自动退出，可以使用Volumio-APP登录配置。

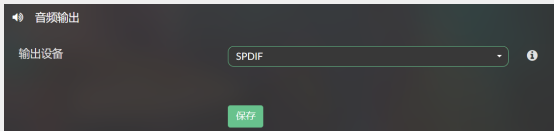


设备使用

- 输入设备可以使用U盘/储存卡/CD/DLNA/Airplay。
- 支持USB/光纤/同轴/AES输出



USB输出以SMSL DAC为例，输出设备选择SMSL USB AUDIO，选择后保存设置



光纤/同轴/AES输出，音频输出设备请选择SPDIF，选择后保存设置

■ 设备开关机

- **开机:**系统初始化+搜索网络大概用时2分钟，LED状态为白色闪烁。
- **关机:**系统进入待机大概用时15秒，此时LED状态为红色闪烁。



Safety Notes

- Install this unit in a well ventilated, cool, dry, clean place-away from direct sunlight, heat sources, vibration, dust, moisture, or cold..
- Use the voltage specified on this unit Only. Using this unit with a higher voltage than specified is dangerous and may cause fire , damage to this unit, or personal injury. Our company will not be held responsible for any damage resulting from the use of this unit with a voltage other than that specified.
- Do not attempt to modify or fix this unit by yourself. Contact a person or customer service when any service is needed. The cabinet should never be opened for any reason.
- When not planning to use this unit for long periods of time (i.e. when going on vacation), disconnect the power cable from the AC wall outlet.

Important note:

The product specifications and information mentioned in this manual are for reference only. The content of this manual is subject to change without notice.



Warranty Terms

1.The Term of Service

Foshan Shuangmusanlin Technology Co., Ltd promises to offer good-quality products. If the product is broken in 7 days after purchasing when you use it normally, you can choose to send it back for return, replacement or repairing (only the product does not affect the second sales can be returned). Repairing for free in one year if you use it normally.

2.Date of purchase is in accordance with the date on invoice or receipt used by seller, and if you buy it on line, you can show the screenshot of trade.

3.If an inappropriate usage causes the unit damaged, the warranty will be void. As below.

- All damages by inappropriate use, including using it under non-normal working environment or without following the instructions.
- Dismantling, refitting, repairing by user in private.
- Causing damage by using some fittings instead of the designative or accredited ones.
- Cannot provide credible proof of purchase.

4.Sending it back to our company for repairing.

5.Contact your S.M.S.L Audio reseller for a return or replacement.



Features

- Supports USB2.0 x 2,USB3.0 x 1,LAN,WIFI multi-input interface;
- Supports native connection to music servers such as TIDAL and QOBUZ;
- Supports audio push services like Airplay and DLNA;
- Supports coaxial, optical, AES/EBU and USB outputs.
- Supports USB connection to CD drives for playing CDs;
- Aluminum alloy CNC-machined panel, crafted with precision and a compact design, delivering a premium tactile experience.
- Built-in low-noise audio grade switching power supply.
- Supports connection for MQA decoding.



Packing list

- 1 x SMSL N100
- 1 x Bluetooth antenna
- 1 x Power Plug
- 1 x User manual
- 1 x Warranty card

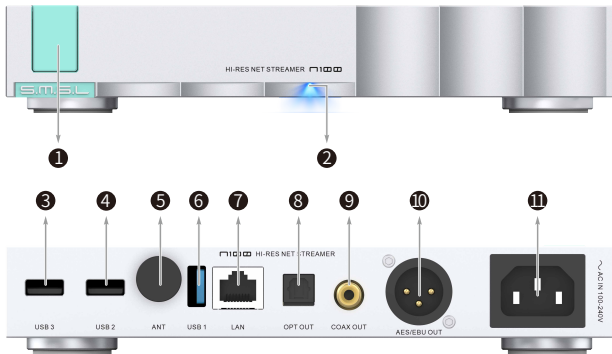


Specifications

| | | | |
|---------------------------|------------------------------------|-----|-------------------|
| Input | USB2.0x2, USB3.0x1, LAN, WIFI | | |
| Output | Optical/Coaxial/ USB/ AES/EBU | | |
| | Optical / Coaxial / AES/EBU | PCM | 44.1kHz ~ 192kHz |
| Sampling rate | USB | PCM | 44.1~768kHz |
| | | DSD | 2.8224~11.2896MHz |
| WIFI specification | 2.4GHz,5GHz (802.11AC) | | |
| Power consumption | maximum 20W | | |
| Standby power | <0.1w | | |
| Size | 200 x 34 x175mm(WxHxD) | | |
| Weight | 880g/1.94lbs | | |

Specifications are subject to change without notice.

Display Interface and Instructions



1 Button

4 USB input 2(USB2.0)

7 LAN input

10 AES/EBU output

2 Indicator light

5 Antenna

8 Optical output

11 POWER input

3 USB input 3(USB2.0)

6 USB input 1(USB3.0)

9 Coaxial output



Instructions for Use

■ Button

- Short press: Power on/off
- Long press: Turn on WiFi hotspot

■ Indicator Light Instructions

- Red Always on: Standby
- White Blinking: Start up process
- Red Blinking: Shutdown process(Shutdown time is approximately 15 seconds)
- Green&Blue Blinking: Start up and searching for a network, waiting for network connection
- Green Always on: Wired network is connected
- Blue Always on: Wireless network is connected
- Green&Blue Always on:Wireless & wired networks are connected



Volumio operation instructions

Preparation for installation

■ Initial use/restoration of factory settings

Preparations:

- Before powering on the device, please install the WIFI antenna or connect the device's network interface to the router's network interface or the wall socket with an Ethernet cable.
- The power-on process takes approximately 2 minutes. During the startup, the LED will flash white. Once the startup is complete, the device will be ready for use, and the LED color will change from flashing white to another color. When a network cable is connected, the LED indicator will change from flashing white to solid green. If the network connection is unavailable, the LED will display a flashing combination of green and blue.

■ System Configuration

Before configuring the device on an Android phone, please visit www.smsl-audio.com to download the Volumio-App.apk from the Firmware/App Updates/Other Options section and install it. For Apple devices, download and install the app from the Apple Store. Both Android and Apple devices can be configured using either a wired network connection or a wireless hotspot. For Windows computers, you can directly connect the playback device's network interface to the computer's network interface, or you can connect both the computer and the playback device to the same router, ensuring they are on the same local network.

Wired network method :

Configuration using the mobile Android device method

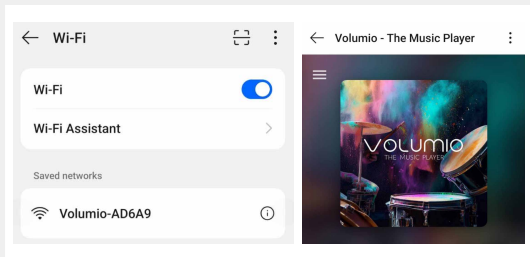
- The network interface of the device is linked to the network interface of the router through the network cable, and the WIFI of the cell phone is linked to the same router to ensure that the APP network and the device are in the same network.
- Open Volumio App, can see the device SMSL N100 appears, if no device appears, click Looking for devices to update the discovery of nearby Volumio devices.
- Enter device configuration and configure language/device name/WIFI, etc.

Configuration using the Window PC method :

The device and the computer are on the same LAN, and the web browser enters the URL <http://friendlywrt/> to access the Volumio management page.

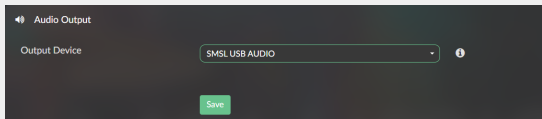
Wireless Hotspot Configuration Method :

- The first configuration defaults to turn on the wireless hotspot to provide link configuration
Note: If not enabled, after the startup LED changes from flashing white to another color (which takes about 2 minutes), press and hold the panel button for 5 seconds to activate the module's wireless hotspot.
- The wireless hotspot name is Volumio-xxx, the mobile device does not find the network, please restart the WIFI update search several times, the mobile device connects to the hotspot and the volumio configuration page appears.
- Enter the configuration page to select language/device name/WIFI... After connecting WIFI, the configuration page will exit automatically, user can use Volumio-APP to login and configure.

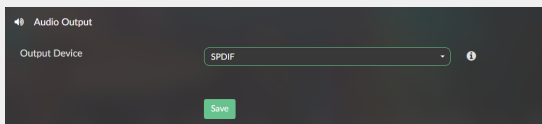


Equipment usage

- The input device can use USB flash disk/memory card/CD/DLNA/Airplay.
- Support USB/optical/coaxial/AES outputs.



USB output to SMSL DAC as an example, output device select SMSL USB AUDIO, select and save the settings.



Optica/coaxial/AES output, please select SPDIF for audio output device, save the settings after selection.

■ Switching on and off of the device

- **Turn on:** It takes about 2 minutes for the system to initialize + search the network, and the LED status is blinking white.
- **Turn off:** It takes about 15 seconds for the system to enter standby, and the LED status is red blinking at this time.

S.M.S.L