

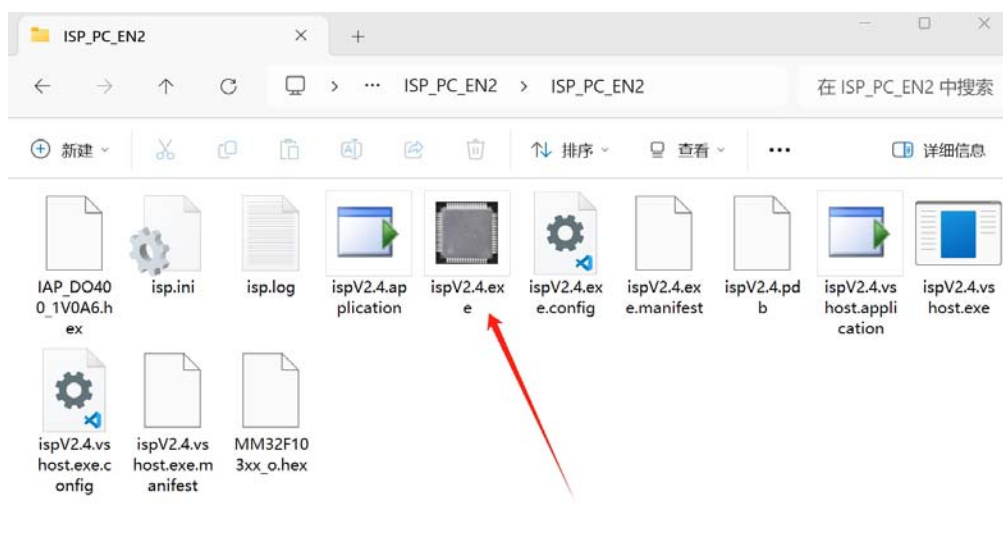
# Update the SMSL DAC MCU firmware

## Brief:

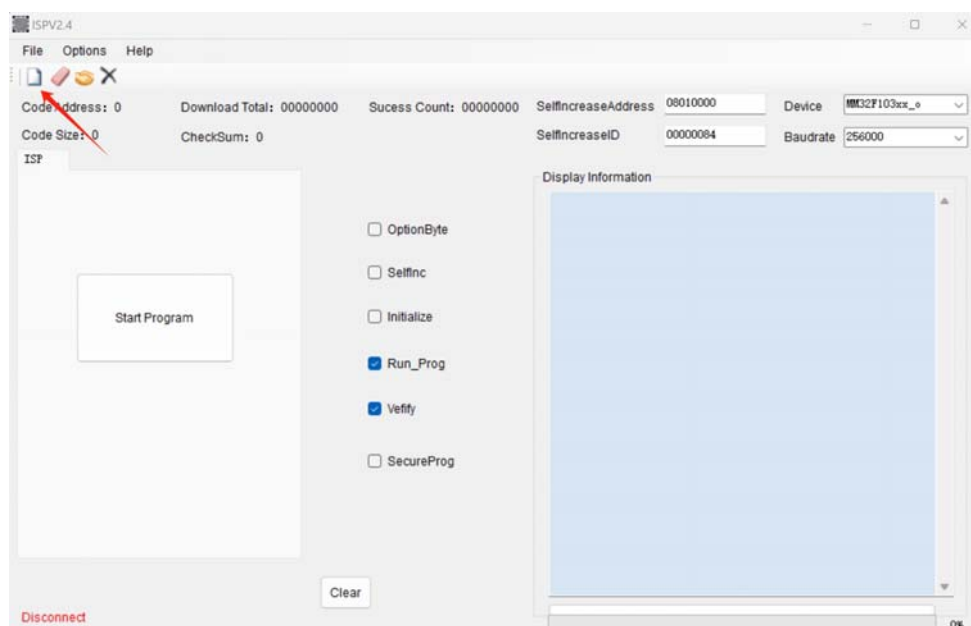
Use Windows OS to do this!

## Steps:

1) Open the APP “**ispV2.4.exe**”



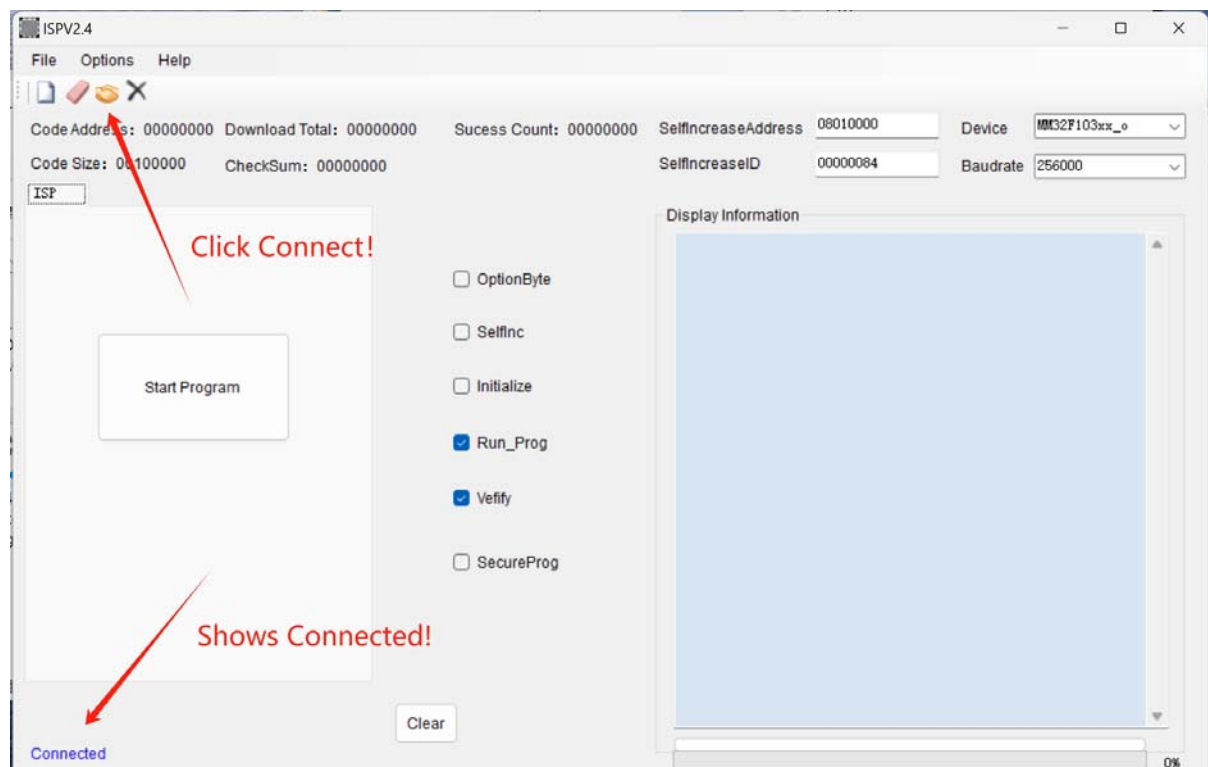
2) Load File “**IAP\_xxxxx.hex**”



3) Connect , Hold the **Knob** and connect the **power cable**!



4) **Connect** with the APP



5) Click “**Start Program**” then wait for 100% .

